



Rabbit anti Cyclin C Polyclonal Antibody

Alternative Name(s): CCNC

Order Information

- **Description:** Cyclin C
- **Catalogue:** 500-7394
- **Lot:** See label
- **Size:** 100ug/200ul
- **Host:** Rabbit
- **Clone:** nan
- **Application:** IHC(P), WB
- **Reactivity:** Hu, Ms, Rt, Dg

ANTIGEN PREPARATION

A synthetic peptide derived from the C-term of human Cyclin C. This sequence is identical to human, mouse, rat.

BACKGROUND

The Cyclin C is highly conserved protein that is involved in divergent cellular processes. This protein interacts with cyclindependent kinase 8 and induces the phosphorylation of the carboxy-terminal domain of the large subunit of RNA polymerase II. The level of mRNAs for this gene peaks in the G1 phase of the cell cycle. Cyclin C is a critical regulator of the G(0)/G(1) transition of the human stem cell. There are two isoforms cyclin C1 and Cyclin C2, most likely the C2 isoform may play an important role in mammalian cells and probably this isoform is the one that is mainly implicated in cell cycle regulation.

PURIFICATION

The Rabbit IgG is purified by Epitope Affinity Purification

FORMULATION

This affinity purified antibody is supplied in sterile Phosphatebuffered saline (pH7.2) containing antibody stabilizer

SPECIFICITY

This antibody recognizes Cyclin C protein. It reacts to human, mice and rat. The other species not tested.

STORAGE

The antibodies are stable for 24 months from date of receipt when stored at -20oC to -70oC. The antibodies can be stored at 2oC-8oC for three month without detectable loss of activity. Avoid repeated freezing-thawing cycles.

APPLICATIONS/SUGGESTED WORKING DILUTIONS*

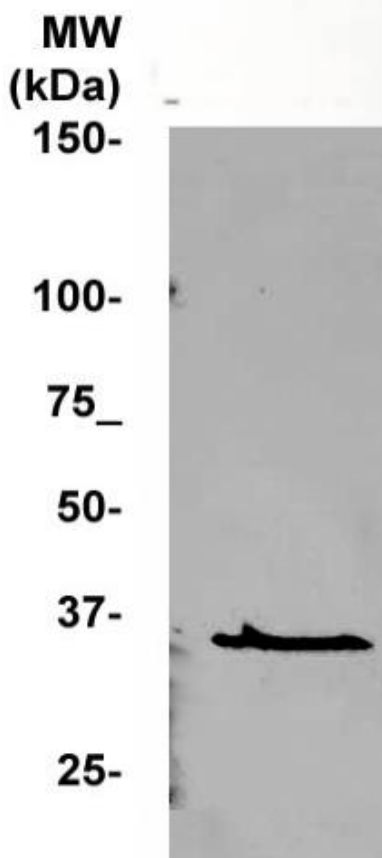
- Western Blot: 0.1-1 µg/ml
- ELISA: 0.01-0.1 µg/ml
- Immunoprecipitation: 2-5 µg/ml
- IHC: 2-10 µg/ml
- Flow cytometry: Not tested
- Molecular Weight: 34.0
- Positive Control: Kidney Tissue
- Cellular Location: Cell Membrane

*Optimal dilutions should be determined by researchers for the specific applications.

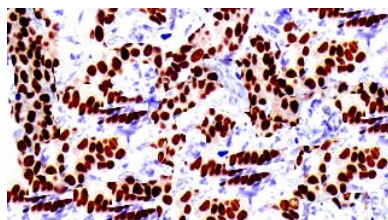
FOR RESEARCH USE ONLY.

AbboMax, Inc 2528 Qume Drive, Suite 8, San Jose, California 95131, USA
1 408-573-1898 (Tel). 1 408-573-1858 (Fax). www.abbomax.com info@abbomax.com

DATA ATTACHMENTS



Western Blot: The cell lysate derived from MCF-7 was immuno-blotted by Rabbit anti Cyclin C (Cat#500-7394) at 1:500. An immunoreactive band around 34kDa is observed.



Immunohistochemistry: Human Human breast carcinoma tissue (FFPE) was stained with Rabbit anti-Cyclin C antibody (Cat# 500-7394) at 1:100 for 10 min @ RT. Staining of formalin-fixed tissue requires boiling tissue sections in 10 mM Citrate Buffer, pH 6.0 for 10 min followed by cooling at RT for 20 min.

REFERENCES

FOR RESEARCH USE ONLY.

AbboMax, Inc 2528 Qume Drive, Suite 8, San Jose, California 95131, USA
1 408-573-1898 (Tel). 1 408-573-1858 (Fax). www.abbomax.com info@abbomax.com